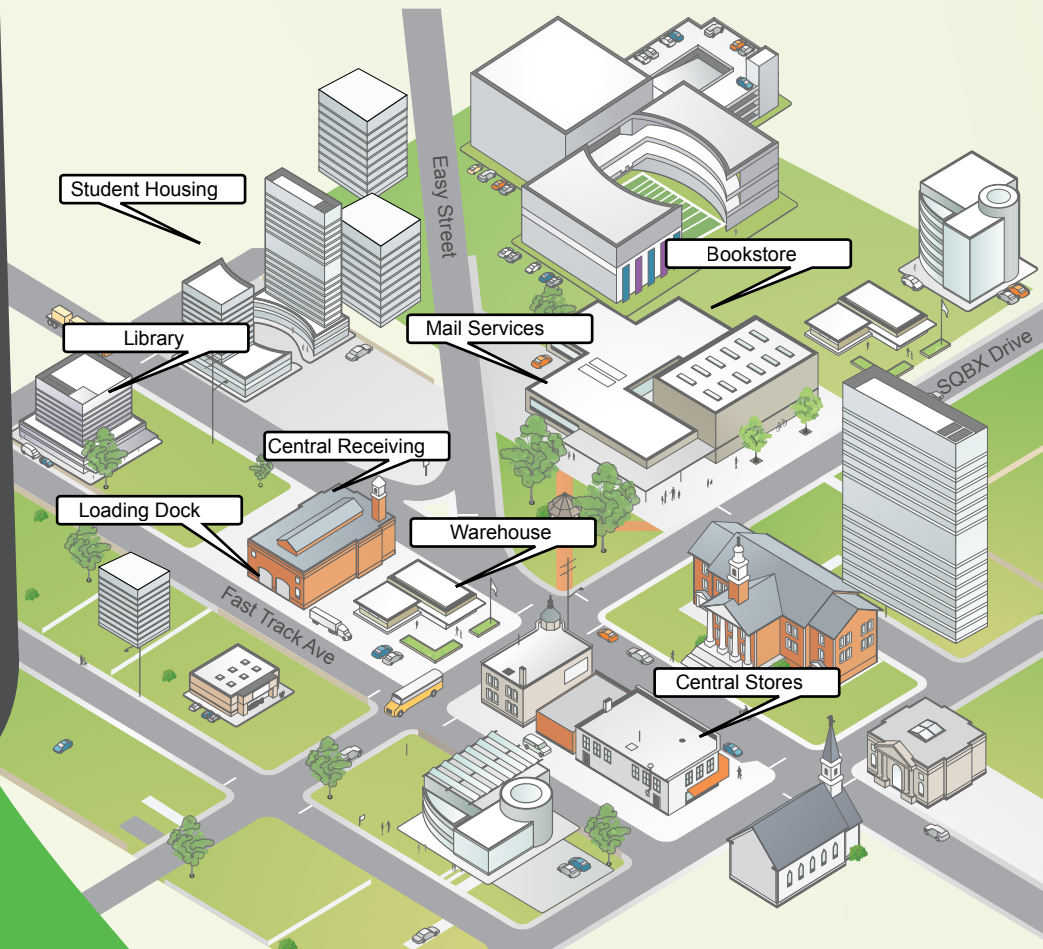
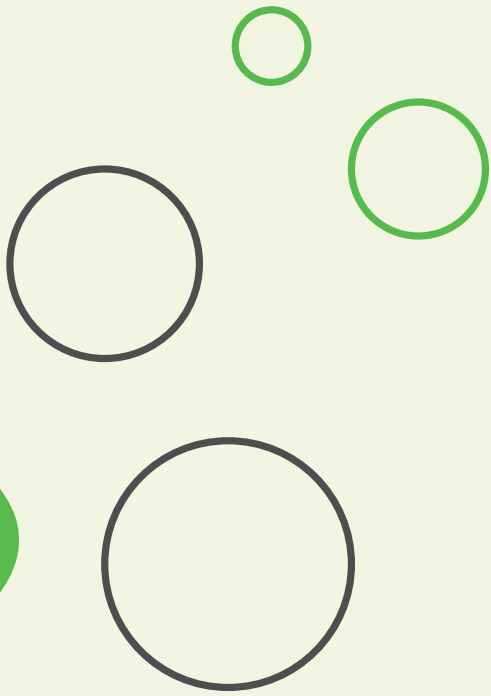
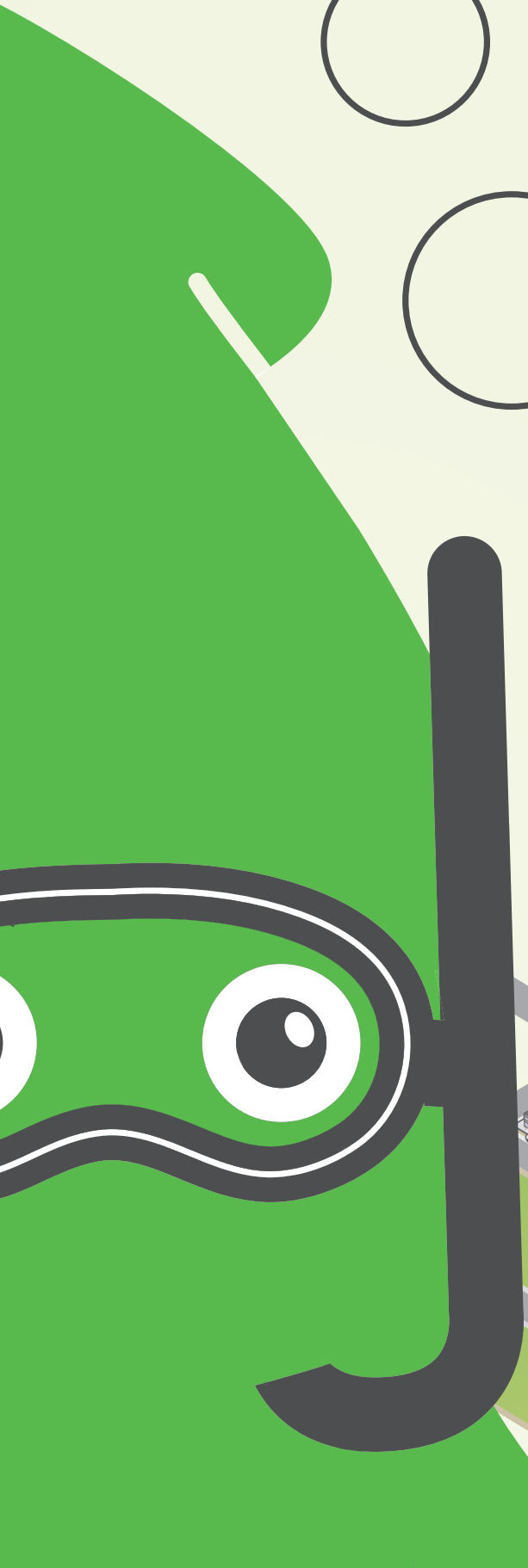
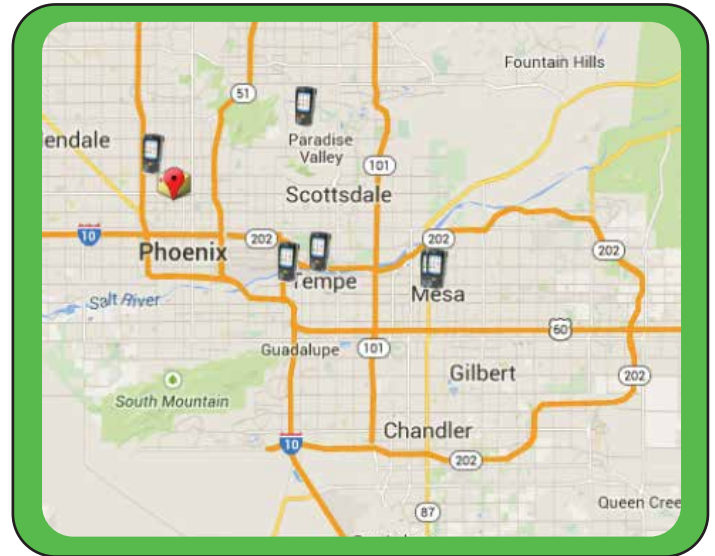


# SqBx

Full Campus  
Tracking  
Solutions



*GPS Mapping  
of Your Devices*



**SqBx**  
*Helps*

- Mail Services
- Central Receiving
- Shipping & Receiving
- Central Stores
- Warehouse
- Student Housing
- Postal Services
- Facilities
- Bookstore & Library
- Transportation and more

**SqBx**  
*Tracks It All*

- Inbound & Outbound Shipping
- Student / Staff / Faculty Portal
- Campus Deliveries
- Fixed Assets
- Package Contents
- Intercampus & Interoffice
- Purchase Order Packages
- Inventory Processes
- Supplies and more..

# Your Tracking Solution *Delivered*

You asked and we delivered. More Features, More Power, More Customization to adapt to your processes, workflows and all of your tracking needs.

Advanced Notification USPS

Alerts

Email & Text

Advanced Routing

GPS

Forwarding Labels

Custom Statuses

More Search Functionality

More Reporting Power

Customize Ship Requests

Faculty & Staff Portal

Single Sign On

## Simpler Than Kiosk



## Advanced Routing



# Bring Even More **Power** With Modules

## **PO Integration**

Receive packages, reconcile PO line items, and deliver with one application.

## **Single Sign On**

Use the same login for SqBx as your campus credentials. Member of InCommon.

## **Faculty & Staff Portal**

Permit everyone on campus visibility over their own packages.

## **Interoffice**

Track time sensitive documents and materials between offices and campuses.

## **Outbound Shipping**

SqBx offers a variety of outbound shipping options.

## **Locker Integrations**

Locker deliveries are no problem with SqBx.

## **Asset Tracking**

Assign and track fixed assets on campus.

## **Ship Requests**

Faculty and staff can create electronic ship requests eliminating paper forms.

## **Fully Integrated Desktop Shipping**

Create carrier labels, rate shop your contracted carrier rates and have visibility over shipping spend.

## **Print Job Tracking**

Send automatic notifications for every stage in your print job process.

## **Faculty Staff Deliveries**

Powerful route management simplifies your faculty/staff delivery processes.





## ***Common Challenges***



**Our delivery drivers seem to take longer than they should on their routes. Is there a way of seeing where they were and how punctual their deliveries and pick-ups are?**



SqBx can plot the location of the handheld against Google Maps in real time to give you the visibility that you require. By barcoding the mail stops and having the driver scan the stop along his/her route you can report against any tardiness.



**We are getting a backload of packages in our mail center because the students do not come down and pick up their items in a timely manner. Is there anything to help eliminate this problem?**



SqBx can automatically send 1st, 2nd, 3rd, final or any other message desired by your campus via text or email to prompt timely package pickup. Messages can be delayed to your specifications.



**We are experiencing high call volume from faculty, staff and even students looking to track their packages. This causes our mail room to slow down. How can SqBx help?**



SqBx provides an internal web portal where faculty, staff, and students can log into and view the status of their own packages.

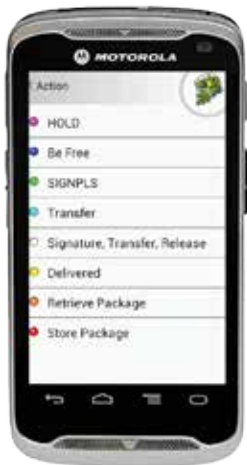


**We would like to use our mobile devices when delivering packages but some of our employees use Android and others use iPhones. Is that a problem?**



Absolutely not! SqBx offers a range of options for all your mobility needs. From Rugged Commercial Android Devices to BYOD of iOS and consumer Android devices, we have you covered. You can mix and match for your optimal solution.

# SqBx Powered By



*\*Rugged Commercial Devices and BYOD iOS and consumer Android Devices Available.  
Contact a representative for more information at 1-800-268-6296.*

## Other ways we can help your campus

Fixed Asset Tracking  
Inventory Management  
Vehicle Tracking  
Print Job Tracking & Notifications  
Process Tracking



SqBxTracking

For more information request a demo  
or speak to a representative

